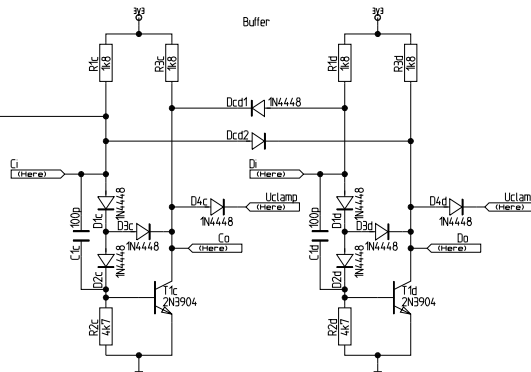


55296Mc
D1
1N4448



Buffer

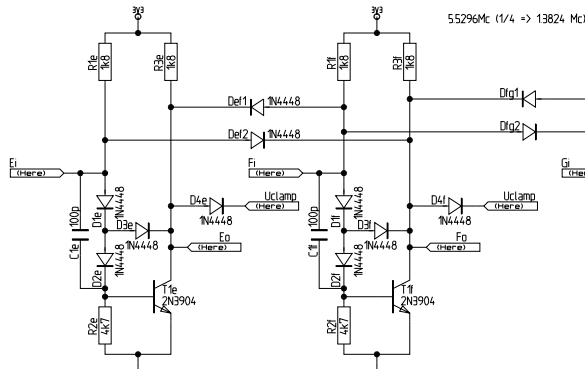
(here) GND 18 N10
(here) 3V3 17 N10
(here) H0 16 N10
(here) H1 15 N10
(here) G0 14 N10
(here) G1 13 N10
(here) F0 12 N10
(here) F1 11 N10
(here) E0 10 N10
(here) E1 9 N10
(here) D0 8 N10
(here) D1 7 N10
(here) C0 6 N10
(here) C1 5 N10
(here) B0 4 N10
(here) B1 3 N10
(here) A0 2 N10
(here) A1 1 N10

DTL0505-1

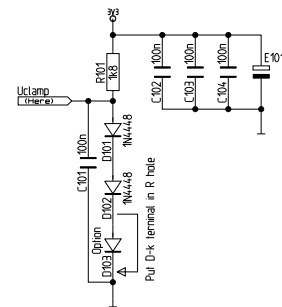
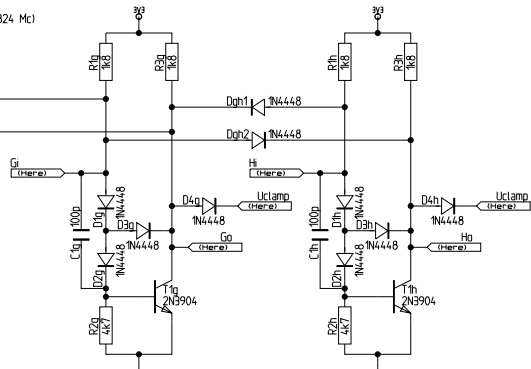
(here) GND 36 N10
(here) 3V3 35 N10
(here) H0 34 N10
(here) H1 33 N10
(here) G0 32 N10
(here) G1 31 N10
(here) F0 30 N10
(here) F1 29 N10
(here) E0 28 N10
(here) E1 27 N10
(here) D0 26 N10
(here) D1 25 N10
(here) C0 24 N10
(here) C1 23 N10
(here) B0 22 N10
(here) B1 21 N10
(here) A0 20 N10
(here) A1 19 N10

(here) GND 54 N10
(here) 3V3 53 N10
(here) H0 52 N10
(here) H1 51 N10
(here) G0 50 N10
(here) G1 49 N10
(here) F0 48 N10
(here) F1 47 N10
(here) E0 46 N10
(here) E1 45 N10
(here) D0 44 N10
(here) D1 43 N10
(here) C0 42 N10
(here) C1 41 N10
(here) B0 40 N10
(here) B1 39 N10
(here) A0 38 N10
(here) A1 37 N10

(here) GND 72 N10
(here) 3V3 71 N10
(here) H0 70 N10
(here) H1 69 N10
(here) G0 68 N10
(here) G1 67 N10
(here) F0 66 N10
(here) F1 65 N10
(here) E0 64 N10
(here) E1 63 N10
(here) D0 62 N10
(here) D1 61 N10
(here) C0 60 N10
(here) C1 59 N10
(here) B0 58 N10
(here) B1 57 N10
(here) A0 56 N10
(here) A1 55 N10



55296Mc (1/4 -> 13824 Mc)



Upd	1	2	3	4	5	6	7	8	9	10	
ECO											
Eng											
Chk											

11/13/2016

1 1.3824Mc

Eng: DWI

Page: 1 / 1

Chk:

Crystal Oscillator

b110a

alepton engineering
www.alepton.eu